



Life In The Heartland Sturgeon Refinery Update

May 6th, 2015



Forward-Looking Statements

Certain information set forth in this document contains forward-looking statements including management's assessment of future plans and operations, expected activity levels, timing of completion of facilities construction and the effects thereof, capital expenditure plans and the impact thereof. By their nature, forward looking statements are subject to numerous risks and uncertainties, some of which are beyond the company's control, including the impact of general economic conditions, industry conditions, volatility of commodity prices, changes to regulatory requirements, risks associated with oil and gas exploration, development, exploitation, production, marketing and transportation, loss of markets, delays resulting from or the inability to obtain required regulatory approvals, environmental risks, competition from other industry participants, the lack of availability of qualified personnel or management and ability to access sufficient capital from internal and external sources. The foregoing list is not exhaustive. Additional information on these and other risks that could affect operations and financial results are available on request.

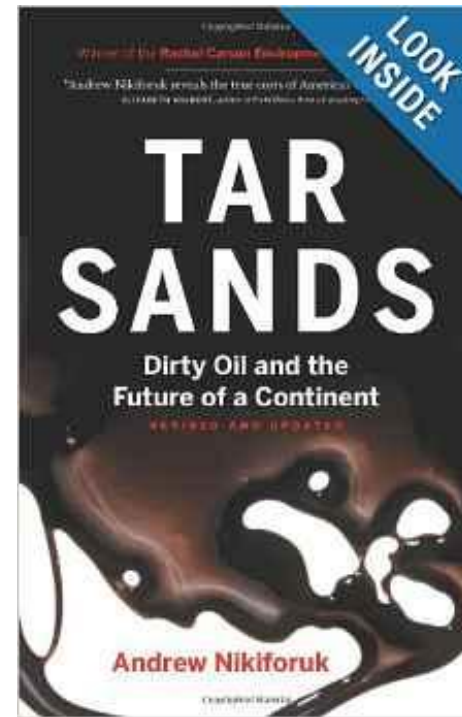
Readers are cautioned that the assumptions used in the preparation of such information, although considered reasonable at the time of preparation, may prove to be imprecise and, as such, undue reliance should not be placed on forward-looking statements. The actual results, performance or achievements of the company could differ materially from those expressed in, or implied by, these forward-looking statements and, accordingly, no assurance can be given that any of the events anticipated by the forward looking statements will transpire or occur, or if any of them do so, what benefits the company will receive. The company disclaims any intention or obligation to update or revise any forward-looking statements, whether as a result of new information, future events or otherwise.

Why build a Refinery Here?

Pipeline and 'Dirty Oil' concerns:

Bitumen May Remain Difficult To Export

Alberta can gain \$\$\$ with better Market Access





The NWR Solution

✓ Provides Best Markets/Highest Value for Bitumen

- Makes products for regional market, then world market
- Exports Low Carbon, Ultra Low Sulphur Diesel vs. unrefined bitumen
- Returns highest value to resource owners from low value feedstock

See Press Release April 17, 2015 correcting facts in recent article

✓ Is Environmentally Responsible

- Manages CO₂ in Alberta, with gasification converting waste to value
- Has low cost recovery of CO₂ allowing Enhanced Oil Recovery before sequestration (Ph 1 equivalent to taking 300,000 cars off the road)
- Has leading water treatment and recycle and minimal water use

✓ Keeps Value, Taxes and Jobs in Alberta

- Creates Jobs and other economic benefits in Alberta and Canada



What have we done?

- ~2,200 workers at site
- 'Goal Zero' – zero Lost Time Accidents
- Bussing program in place with service expanding
- Maximizing Modularization
- Received major vessels and several modules at site
- Civil & foundation work enabling equipment placement
- Some process vessels erected now
- Process tanks well advanced
- 240 kV transmission line energized
- Equipment assembly will continue through 2015~16



Non-Process Buildings





Standing Reactor Vessels





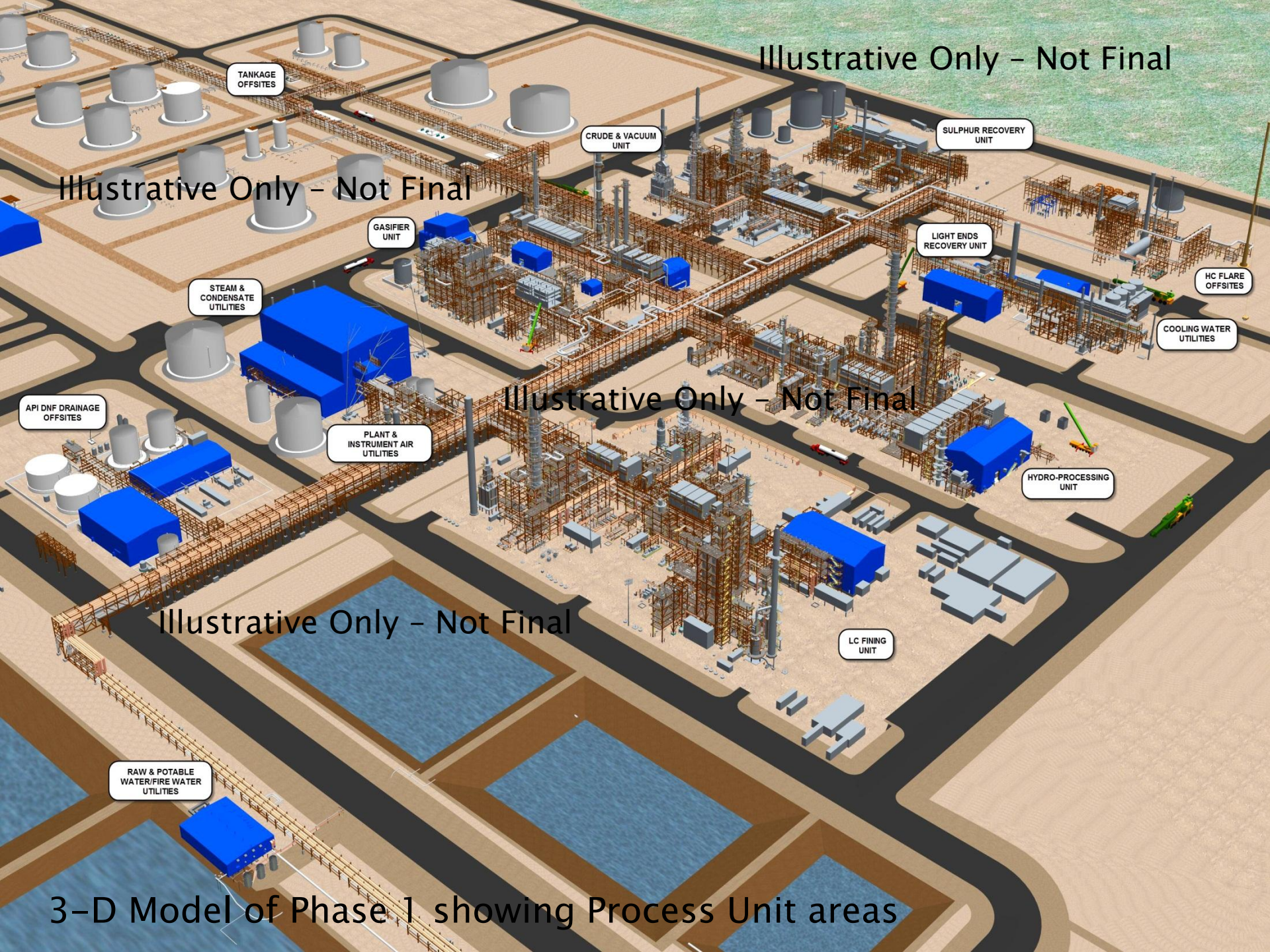
Aerial View looking E-SE





Aerial View looking E-NE







Other Issues and Activities

- Sturgeon County Traffic Infrastructure
 - Bridge Strengthening over Highway 644 (E of Redwater)
 - Critical infrastructure for Sturgeon County/AT unable to fund repair
 - Potential Traffic Lights on H'way 643 (under review w. AT)
 - Enhanced Enforcement on Highway 643 and 825
- Module and Equipment Marshalling Yard in service
- Engineering team will trend down as Operations team trends up
- Module deliveries to site continue through 2015
- Continue placing vessels, modules and equipment



What comes next?

- Modules and equipment continue arriving through 2015 and 2016
- Mount modules and vessels on foundations
- Municipal utilities complete by fall 2015
- Admin bldg in use by late 2015
- Peak labour force during 2015 and 2016
- Target commercial operation Ph 1 Sept/17
- Phases 2 and 3 pending Sanction decisions



“Building it Safe, Building it Right in the Heartland”

It's the Right Thing to do,
and the Right Time to do it



Thank you!

Doug Bertsch

North West Redwater Partnership

403-451-4171

dbertsch@nwrpartnership.com

www.nwrpartnership.com