



Shell Scotford Overview

LITH Community Information Evening
May 13, 2026



Scotford: Producing Vital Energy Products

- Refinery opened 1984
 - 114 kbpd
- Chemical plants - Styrene in 1984, Glycols in 2000
- Upgrader opened in 2003, expanded in 2011
 - 320 kbpd
- Renewable Energy
 - 60 MW - Solar
 - 50 MW – Wind PPA



SHELL ENERGY AND CHEMICALS PARK SCOTFORD

CANADA'S MOST ENERGY EFFICIENT REFINERY

CUSTOMER FOCUS

Delivering customer centric products from current and new value streams.
Bringing customers and assets together.

POTENTIAL FUTURE PRODUCTS & PERFORMANCE CHEMICALS



LOW-CARBON FUELS



BIO-FUELS AND HYDROGEN



LOW-CARBON CHEMICALS

CARBON CAPTURE AND STORAGE

Proven CO₂ capture and storage performance / leveraging strong geology



2000m

POTENTIAL FUTURE RENEWABLE FEEDSTOCKS

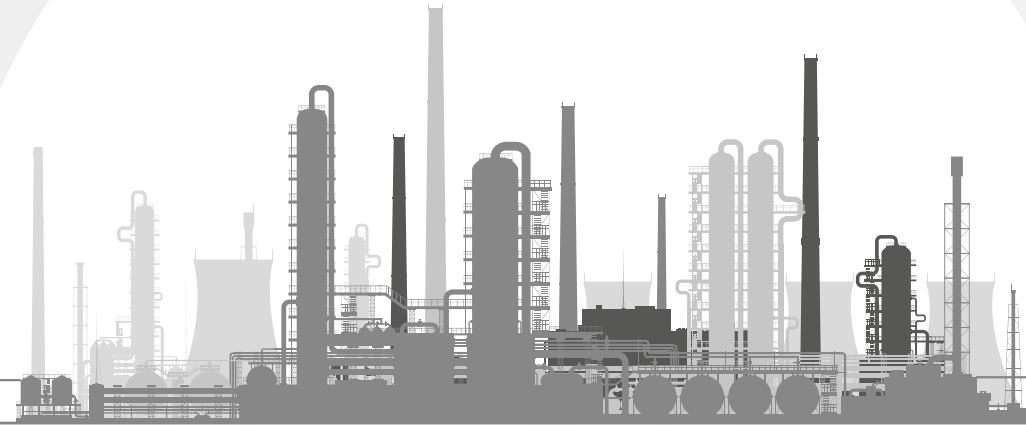
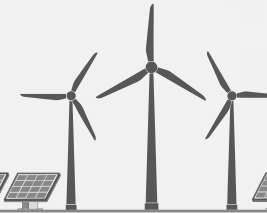


BIOMASS



WASTE OILS/FATS

RENEWABLE POWER



What we Produce

Our Operations

- **Oil Processing - 434 kbpd capacity**
 - Refinery - 179 kbpd
 - Upgraders - 255 kbpd
- **Chemicals**
 - Ethylene Glycol - 1470 tonnes/day
 - Styrene - 1,370 tonnes/day
- **Carbon Capture and Storage**
 - Quest - 1,000,000 tonnes/year
 - Polaris/Atlas* - 650,000 tonnes/year
- **Renewable Power**
 - Chem Solar and Silicon Ranch - ~ 60 MW
 - Hand Hills Wind PPA - 50 MW

We make fuels and consumer products

Scotford manufactured almost 6 billion litres of gasoline, diesel, and jet products and 20% of gasoline and diesel consumed in Western Canada

- **Diesel - 90** - 95% of Scotford's diesel production is consumed in Canada
- **Gasoline** - Over 100,000 fill-ups/day of gasoline originate from Scotford.
- **Jet Fuel** - 35-40% of the jet fuel consumed in Western Canada.
- **Quest** - first carbon sequestration facility in Alberta. Has been safely operating for 10+ years and on-track to verify 10 million tonnes of CO2 sequestered
- **Atlas Carbon Storage Hub** - first open-access carbon sequestration hub in Alberta, supporting regional decarbonization efforts, developed in partnership with ATCO EnPower
- **Ethylene Glycol** - ~30% of the ethylene glycol in Canada and 67% of glycols in North America from Shell comes from Scotford. Glycol is primarily used for water bottles (PET) and antifreeze
- **Styrene** - only Shell manufacturing site for styrene monomer in the Americas and the only production facility in Canada. Styrene is a key building block in the plastics and rubber industry.

Upcoming Scotford Activities

Polaris – Carbon Capture Facility

- Construction ongoing, operational in 2028
- Peak construction - 400 people – Q4 2025/Q1 2026

Atlas Carbon Sequestration Hub

- Carbon sequestration wells drilled near Bruderheim/Josephburg

Regional Economic Impacts

Employment and Workforce Development

We create long-term, good jobs that support families and build communities

- 1200 FTE and 50+ Embedded Contractors
 - Regional Economic Impact from salaries - \$176 million
 - Average Scotford salary \$160,000+ which is double the average salary of Albertans
 - Extremely Low Resignation rate ~1.5%

Scotford sustains an additional 7200 jobs*

- For every job at Scotford, an additional 6 jobs sustained in the service sector and supply chain

*multiplier developed by Chemical Industry Association of Canada

We Drive the Local Economy

Scotford's Annual 3rd Spend (Base Business Operations)

- ~\$250 million spent
 - Materials 40%
 - Labour 60%
 - 1.3 million hours direct field labour

Impact of Turnarounds

- 2025 Spring Turnaround Spending

Highlights

- \$275 million CAD spent
 - ~80% is labour spend
 - 1.1 million hours direct field labour

Municipal Taxes and Social Investment

Municipal Taxes Revenues

Scotford Supports our
Community

- ~ \$50 million in property taxes to Strathcona County

Community Donations - \$565,000

- Women Building Future - Digital Literacy Program - \$350,000
- Mental Health Foundation – Kickstand Integrated Youth Service Programs - \$100,000
- NAIT – Jill of All Trades Program - \$75,000
- University of Alberta – DiscoverE Carbon Capture Boxes - \$30,000
- Regional community events, sponsorships and donations - \$10,000

Investing in Our Community

Supporting Strathcona County Emergency Response – Mobile Incident Command Post Donation



