

AER TODAY



WHAT WE REGULATE



over

440 000

kilometres
of pipelines*



over

156 000

operating natural gas
& oil wells



over

28 000

oil facilities



over

460

operating
gas processing plants



over

19 000

gas facilities



over

230

operating oilfield waste
management facilities



over

145

primary/enhanced
recovery in situ projects



25

thermal recovery
in situ projects



8

operating
oil sands mines



5

operating
bitumen upgraders



9

operating
coal mines



2

suspended
coal mines



3

decommissioning
coal mines



1

decommissioning coal
processing plants



geothermal, brine-hosted
& hard rock minerals

*Operating, permitted, abandoned, and discontinued. We also provide inspection and incident response support for 12 000 kilometres of pipelines regulated by the Alberta Utilities Commission.

Updated April 2022



FULL LIFE CYCLE REGULATION



PROTECTING ALBERTANS

INSPECTIONS

7825

2021/22

AUDITS PERFORMED

↓ 5.1% or **6168**

2020 VS. 2021

2021/22

EMERGENCIES

81

2021/22

INVESTIGATIONS

31 OPENED &

IN 2021/22

ENFORCEMENT

16 ACTIONS &

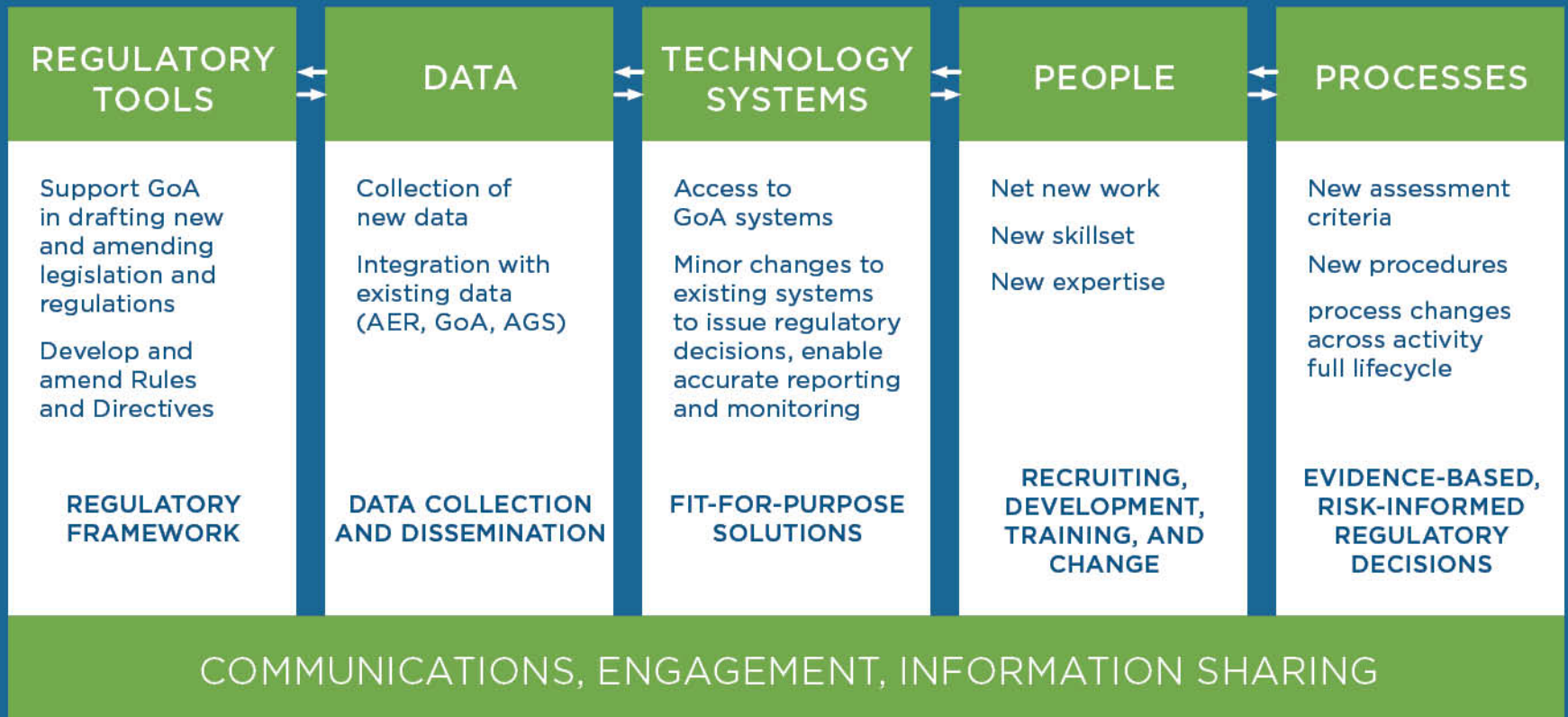
IN 2021/22

\$3.6M

PENALTIES
FROM 2017-21

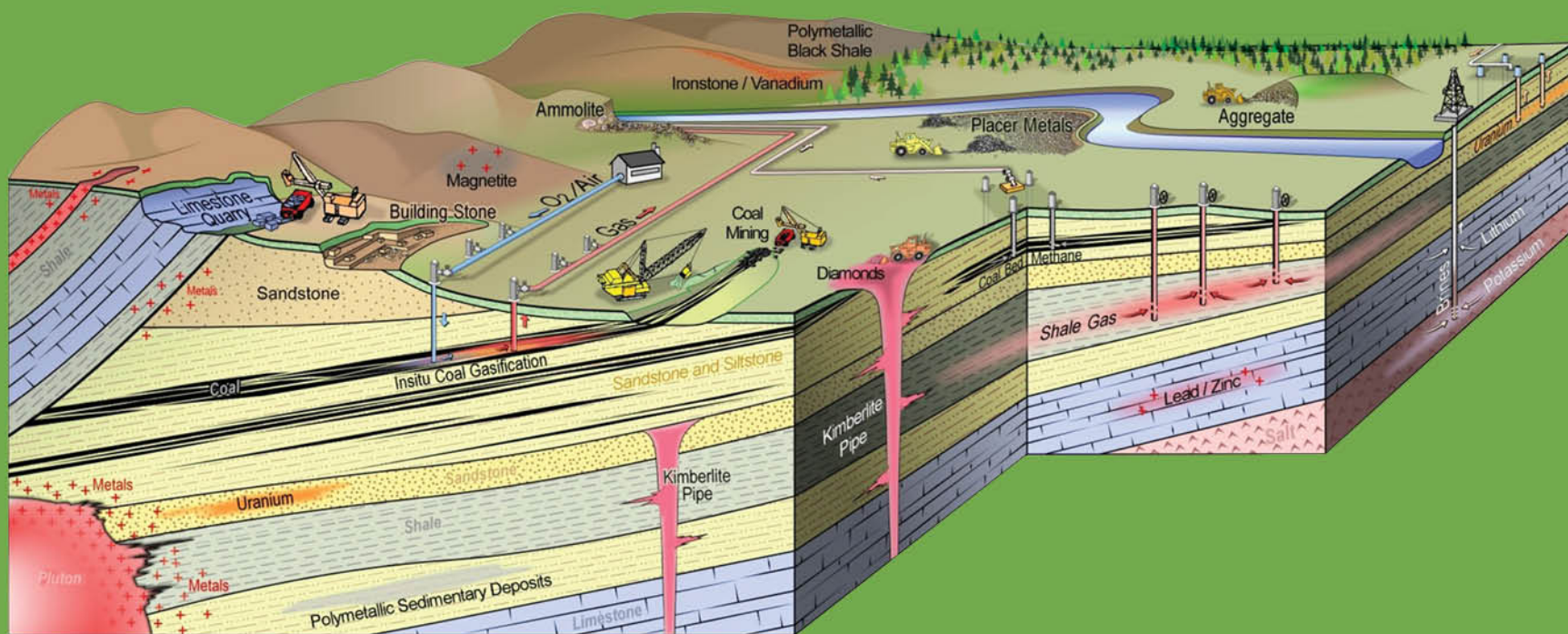


MANDATE EXPANSION – SCOPE OF WORK





ALBERTA GEOLOGICAL SURVEY



CLOSURE ACTIVITIES

DECOMMISSIONING

↑ **11 816**
IN 2021/22

CLOSURE WORK

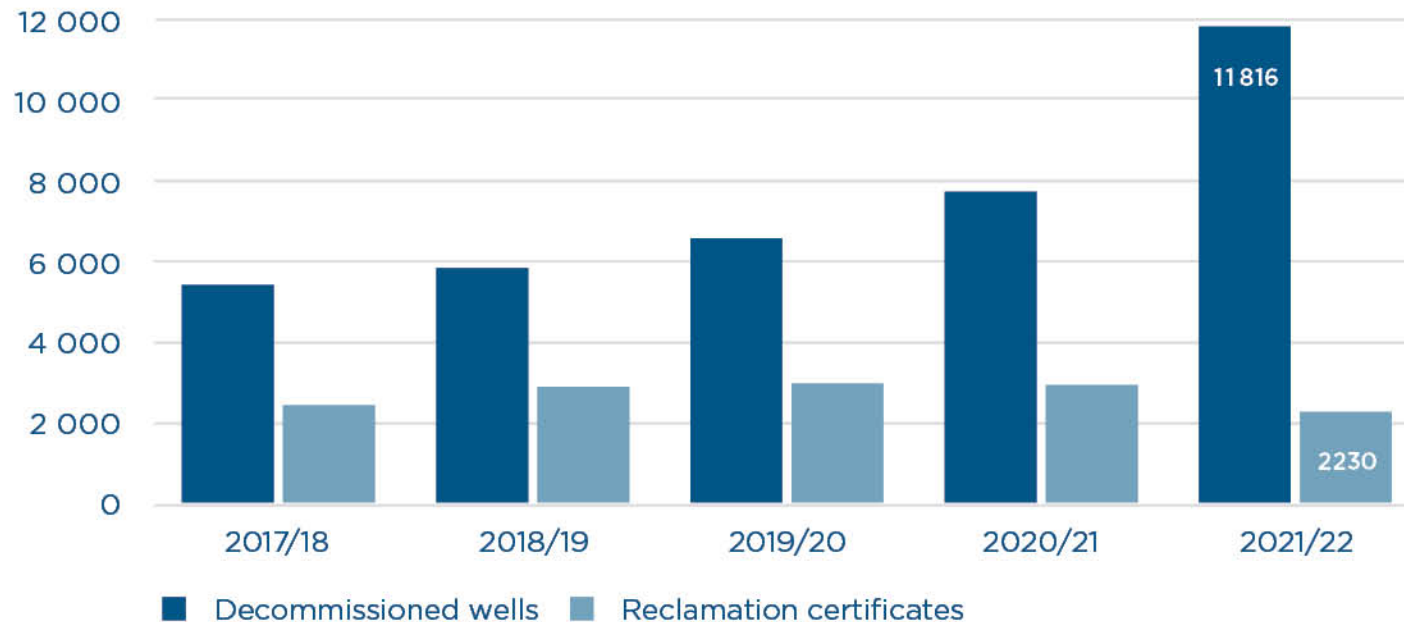
\$295M
UNDER ABC

ORPHAN FUND LEVY

\$6M FOR
LARGE FACILITIES

MANDATORY SPEND

\$700M
TARGET FOR 2023



BENDING THE CURVE

MANDATORY
SPEND

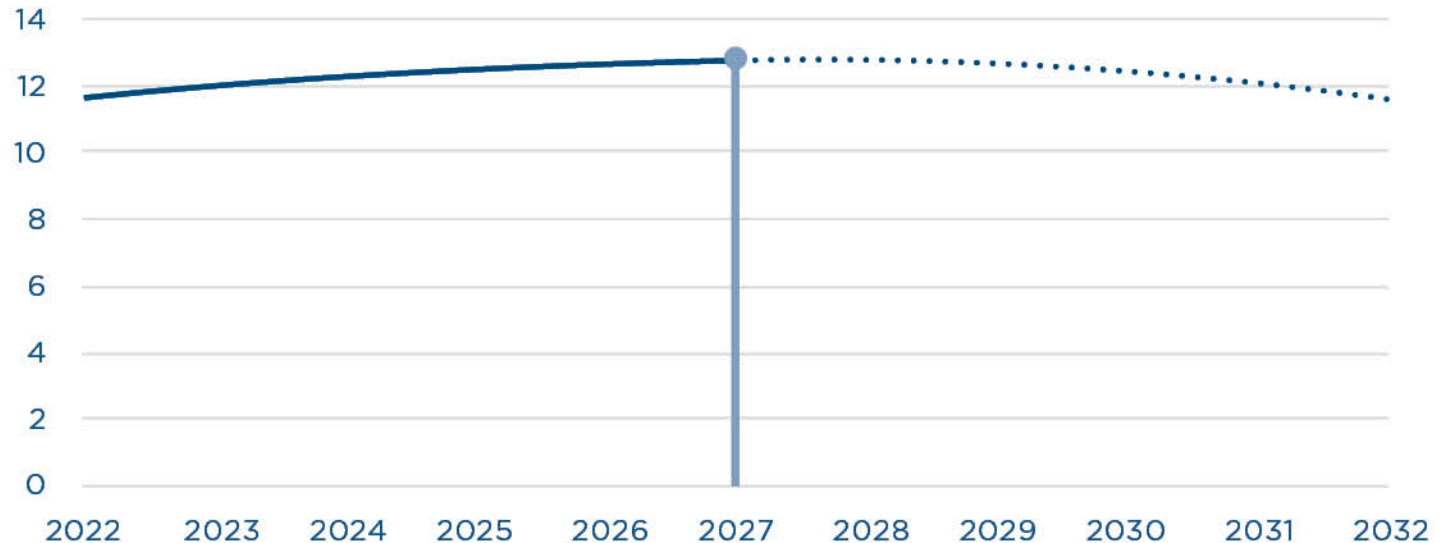
\$422M
TARGET FOR 2022

TO

\$992M
TARGET FOR 2027

↑ **9%/YEAR**

\$B INACTIVE LIABILITY



CLOSURE
SPEND
(\$MM)

| | | | | | | | | | | |
|-------|-------|-------|-------|-------|-------|--------|--------|--------|--------|--------|
| \$442 | \$700 | \$764 | \$833 | \$909 | \$992 | \$1082 | \$1180 | \$1288 | \$1405 | \$1533 |
|-------|-------|-------|-------|-------|-------|--------|--------|--------|--------|--------|



IMPROVING ENVIRONMENTAL OUTCOMES



PIPELINE INCIDENTS



41%

OVER THE PAST DECADE

INDUSTRY RECYCLED



77%

OF THE WATER IT USED

METHANE EMISSIONS



34%

2014 VS. 2020

WATER USE
INTENSITY



10%

IN SITU



10%

ENHANCED OIL
RECOVERY

2016 VS. 2020





THANK YOU

QUESTIONS?

