The background of the slide is a photograph of an industrial facility, likely a refinery or chemical plant. It features a complex network of pipes, metal structures, and two prominent tall distillation columns. The facility is situated in a flat, open landscape under a clear blue sky. A white curved line separates the photograph from the text on the right.

A Regional Approach to Noise Management

**Life in the Heartland
Community Info Evening**

October 16, 2019



- **The Northeast Capital Industrial Association (NCIA)** is a not-for-profit cooperative representing industry located in the municipalities of:
 - Strathcona County
 - Sturgeon County
 - City of Fort Saskatchewan
 - Lamont County
- Started in 1981 as Fort Saskatchewan Regional Industrial Association (FSRIA) and rebranded to NCIA in 2004.



- NCIA is **the voice of industry** in Alberta's Industrial Heartland.
- NCIA spends over 10,000 hours/year working with the Government of Alberta on environmental policy matters related to the Edmonton Metropolitan Region and Alberta's Industrial Heartland.



A Regional Approach to Noise Management



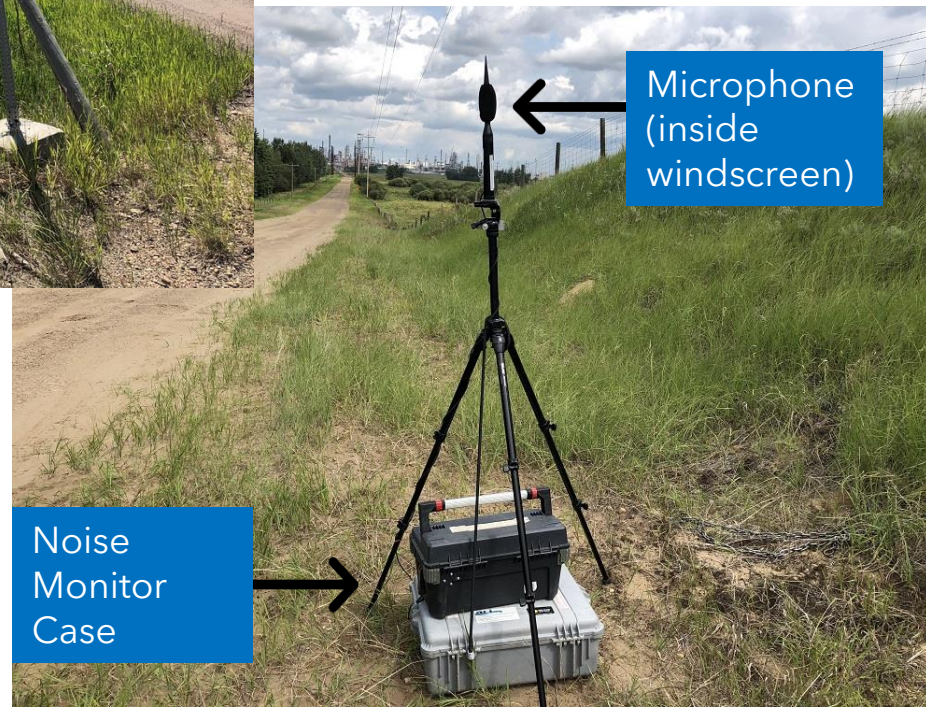
What it is:

- First of its kind in the world.
- A best practices approach to manage environmental noise from member facilities on a regional basis.

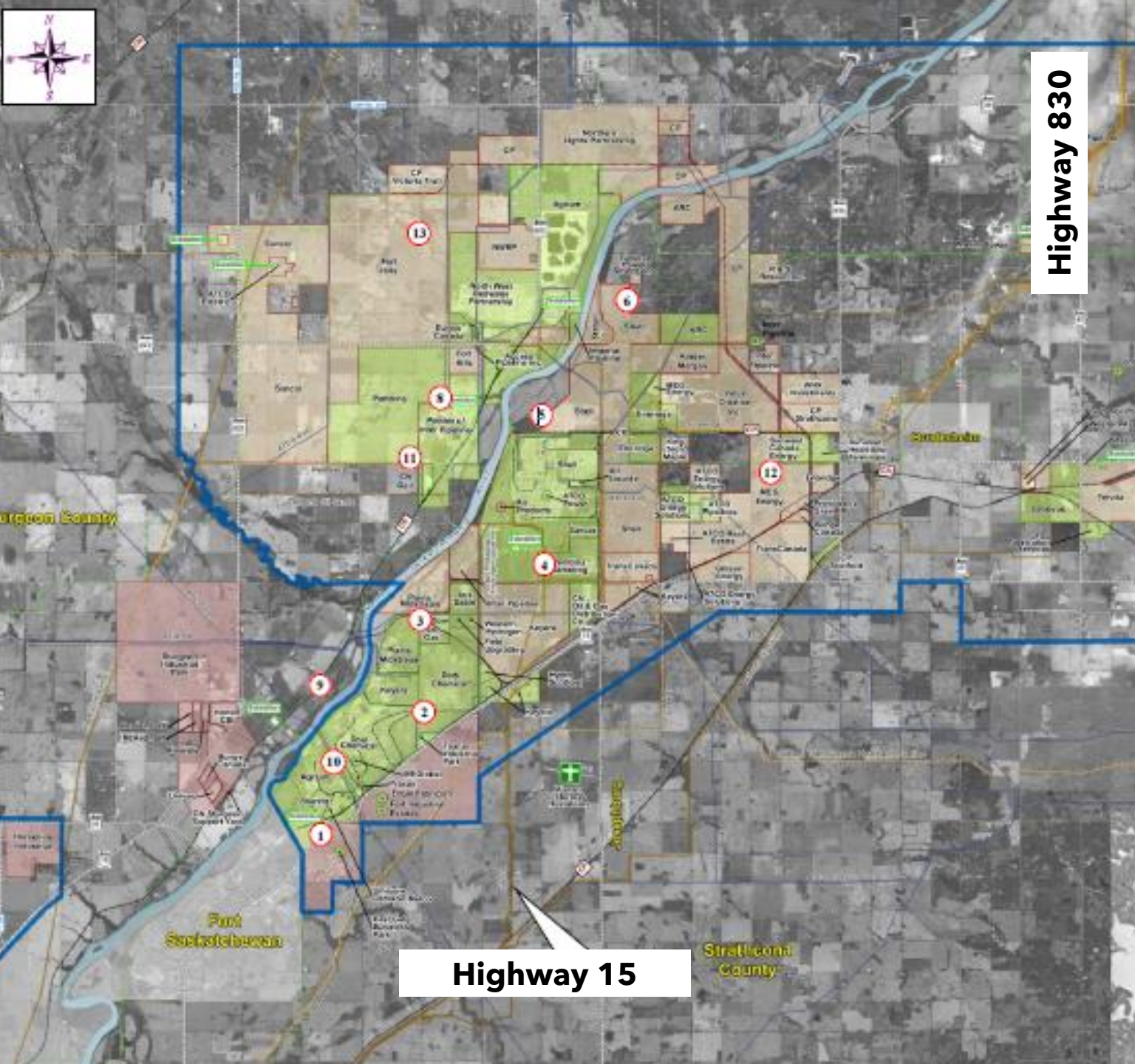
What it is not:

- A tool to manage mainline road or rail noise, as we do not have any control over those activities.

How it Works



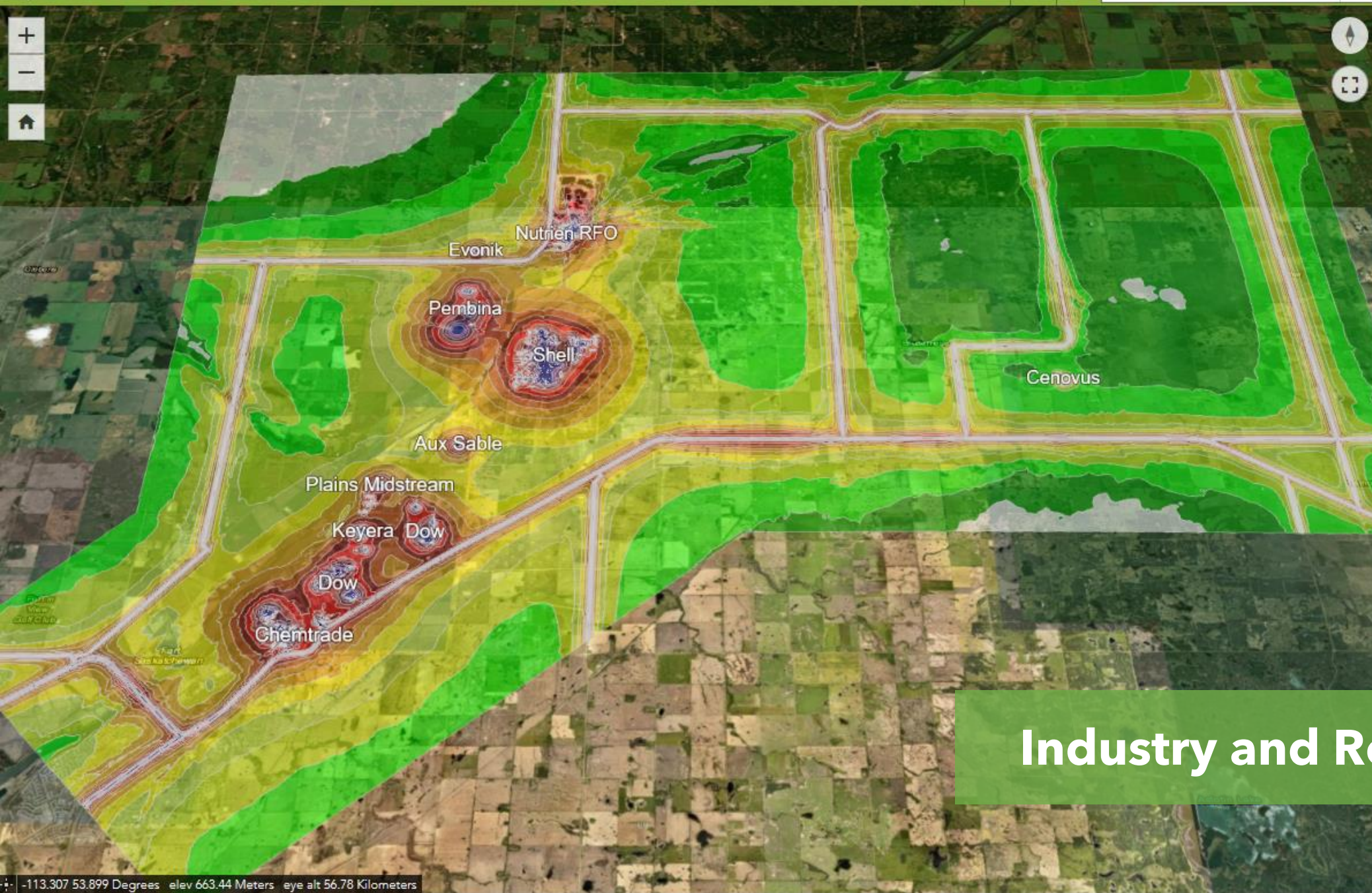
- Member facilities worked with a consultant to develop a site noise model.
- Those models are combined into one tool, the **ARC GIS MODEL**, to show the environmental noise footprint of NCIA member companies in the region.
- First rolled out in 2012, the regional model was updated in 2015 and 2018.
- Both the Alberta Energy Regulator and Alberta Utilities Commission use the tool as part of the approval process for new or modified facilities in the region.



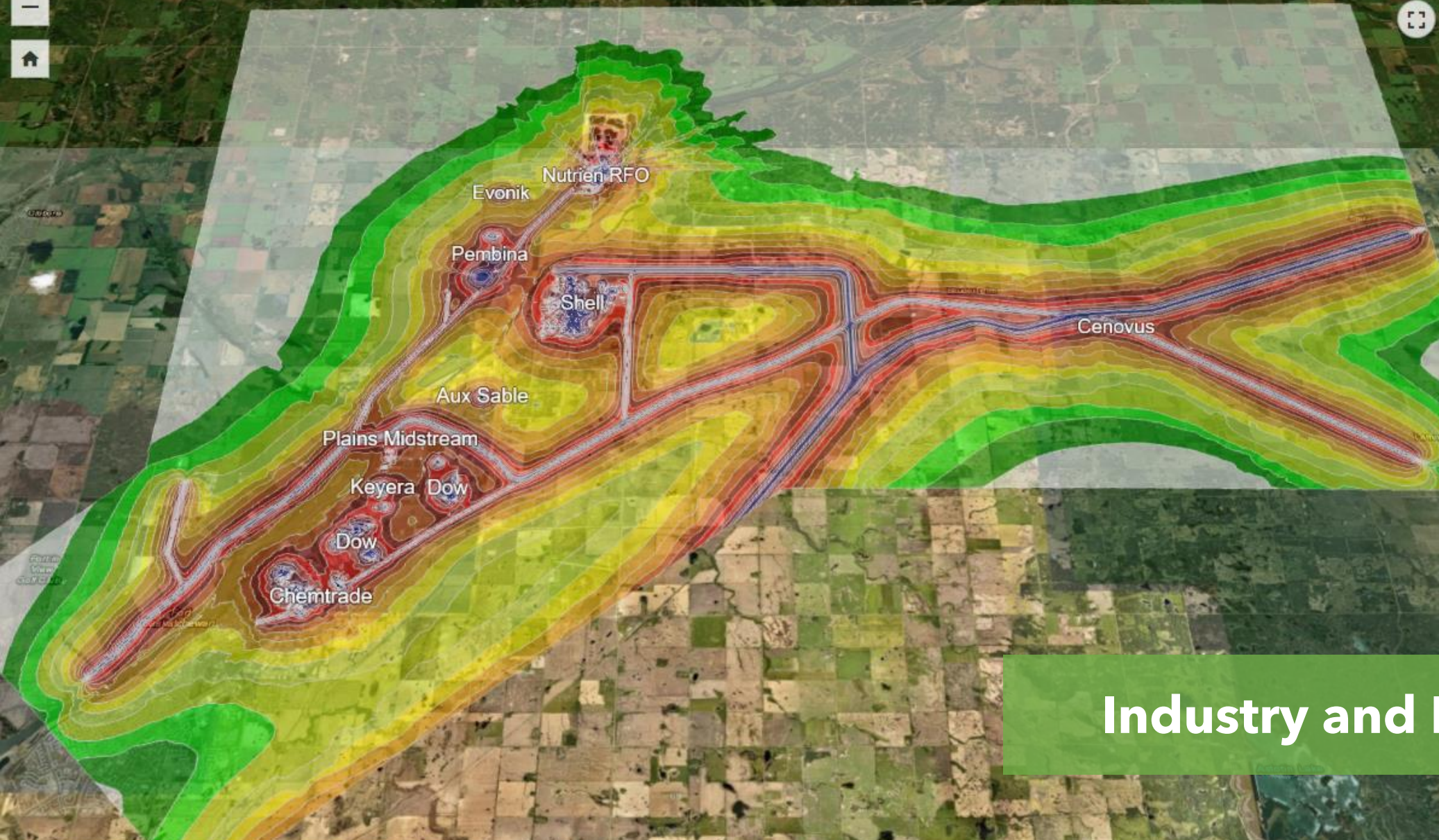
- Each year, the predictive accuracy of the model is checked by doing on the ground noise measurements at 12 pre-selected locations.
- To date, NCIA has found good agreement between the field measured data and what the model predicts.



Industry Only



Industry and Roads



Industry and Rail



Industry with Road and Rail



Dr. Laurie J. Danielson, P.Chem.
Executive Director
Northeast Capital Industrial Association
780.992.1463

www.ncia.ab.ca
www.lifeintheheartland.com