



Managing Noise from Member Facilities: A Regional Initiative using Google Earth

Life in the Heartland Presentation

October 27, 2014



Regional Noise Management Plan

- What it is:
 - A best management practices approach to manage environmental noise from member facilities on a regional basis.
 - First of its kind in the world.
- What it is not:
 - A tool to manage mainline road or rail noise as we do not have any control over those activities.

How it Works

- Each of our member facilities has worked with a consultant to develop a site noise model.
- Those models are combined into one tool to show the environmental noise footprint of NCIA member companies in the region.
- Both the Alberta Energy Regulator and Alberta Utilities Commission use the tool to approve new or modified facilities in the region.

Field Validation

- Each year, the predictive accuracy of the model is checked by doing on the ground noise measurements at 11 pre-selected locations.
- To date, we have found very good agreement between the model and the measured data.

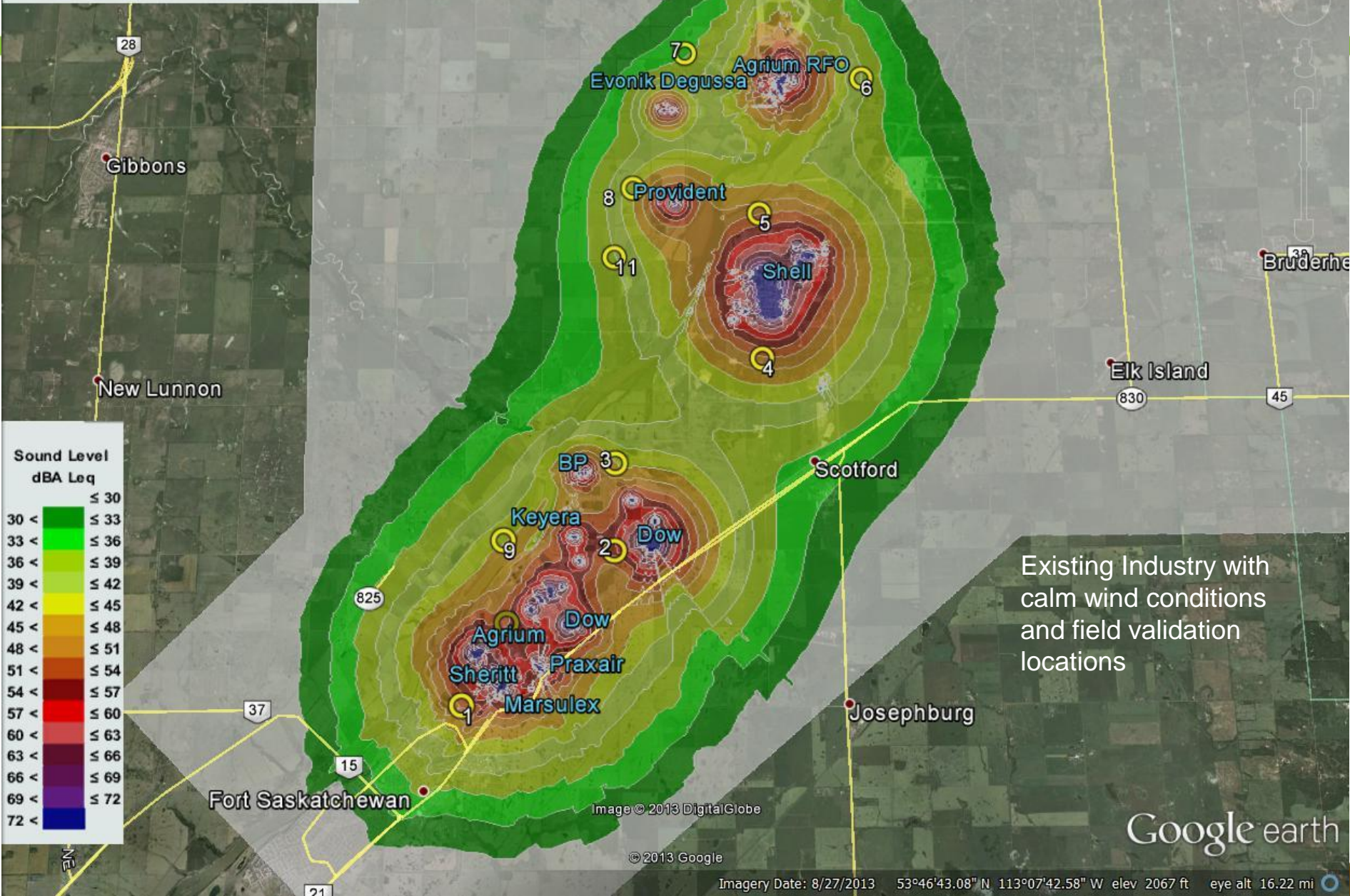
Google Earth Platform

- We are working on rolling out publicly (should happen November/December of this year) a Google Earth version of the model.
- Anyone would be able to use it.
- It would have the following features:

NCIA Regional Noise Model

Case 3A: All Existing Facilities
November 2011

While every effort has been made to ensure the NCIA Regional Noise Model is as accurate as possible, there may be localized differences between measured and predicted values



NCIA Regional Noise Model

Case 3B: All Existing Facilities + Road Contribution
November 2011

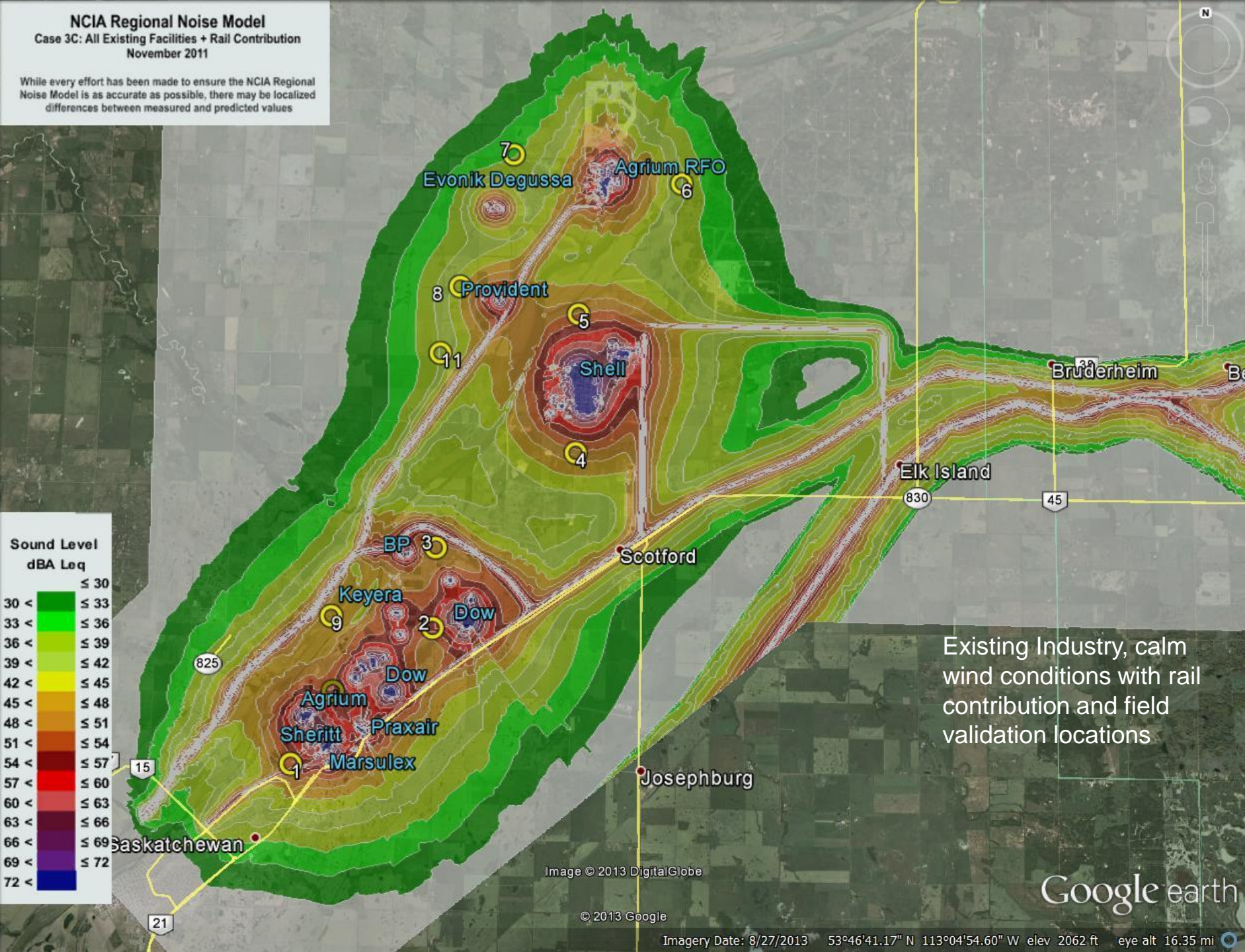
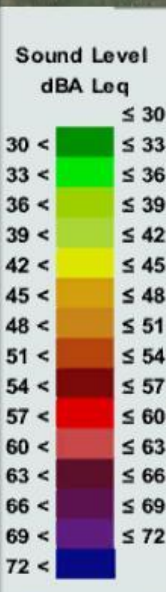
While every effort has been made to ensure the NCIA Regional Noise Model is as accurate as possible, there may be localized differences between measured and predicted values



NCIA Regional Noise Model

Case 3C: All Existing Facilities + Rail Contribution
November 2011

While every effort has been made to ensure the NCIA Regional Noise Model is as accurate as possible, there may be localized differences between measured and predicted values



Existing Industry, calm
wind conditions with rail
contribution and field
validation locations

Google earth

NCIA Regional Noise Model

Case 3D: All Existing Facilities + Road + Rail Contribution

November 2011

While every effort has been made to ensure the NCIA Regional Noise Model is as accurate as possible, there may be localized differences between measured and predicted values



Contact

Dr. Laurie J. Danielson, P.Chem.
Executive Director
Northeast Capital Industrial Association
780.992.1463

Websites:

www.ncia.ab.ca

www.lifeintheheartland.com

www.ourregionourfuture.ca