





Sturgeon Refinery

- First new greenfield refinery in Canada since 1984
- First refinery designed with carbon capture solution from the outset, reducing the carbon footprint of bitumen refining
- Product destined for markets mainly in Western Canada by truck or rail
- Direct conversion of bitumen to much higher value diesel and other products



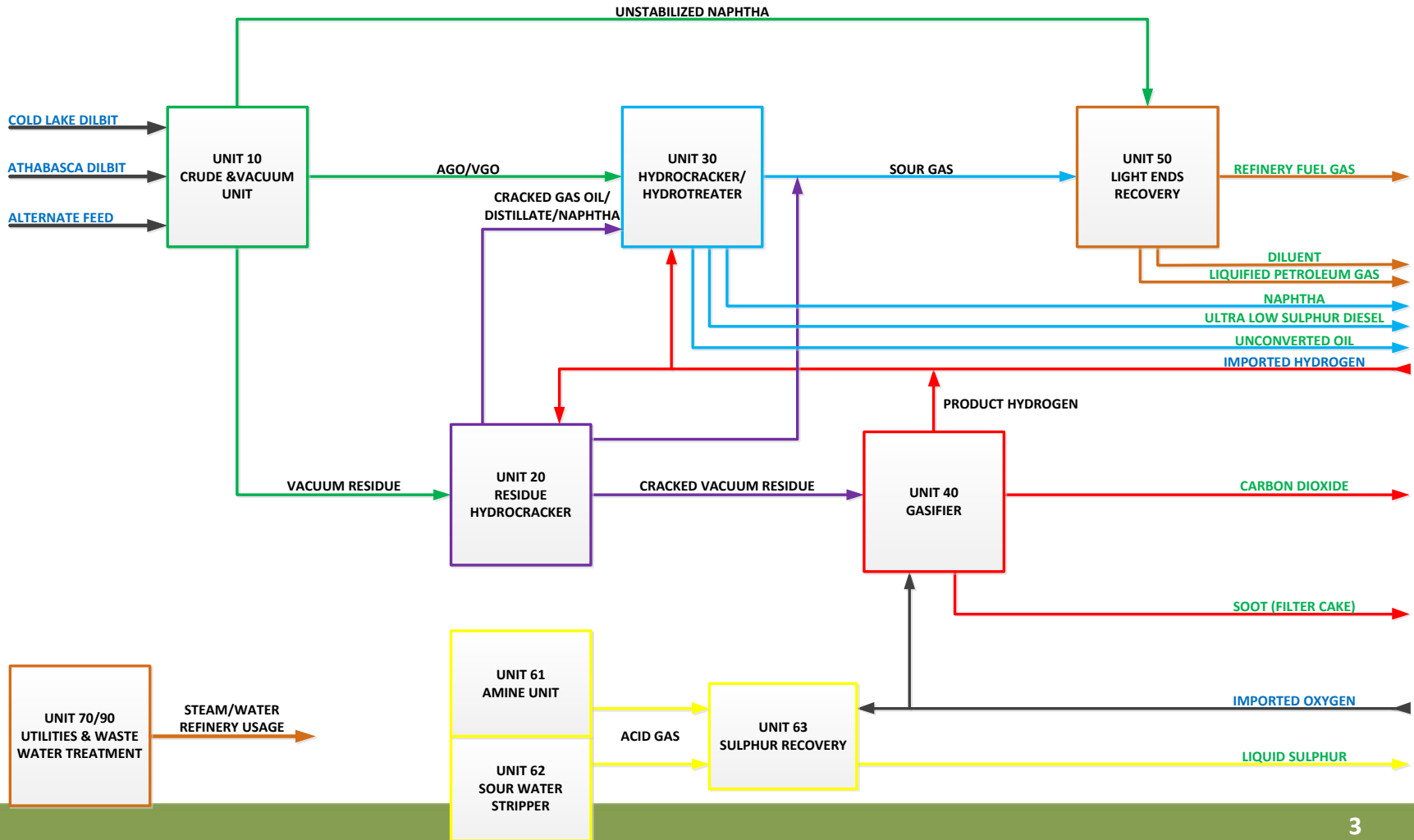


Refinery Block Flow Diagram

Bitumen Blend Feedstock
~79,000 bpd



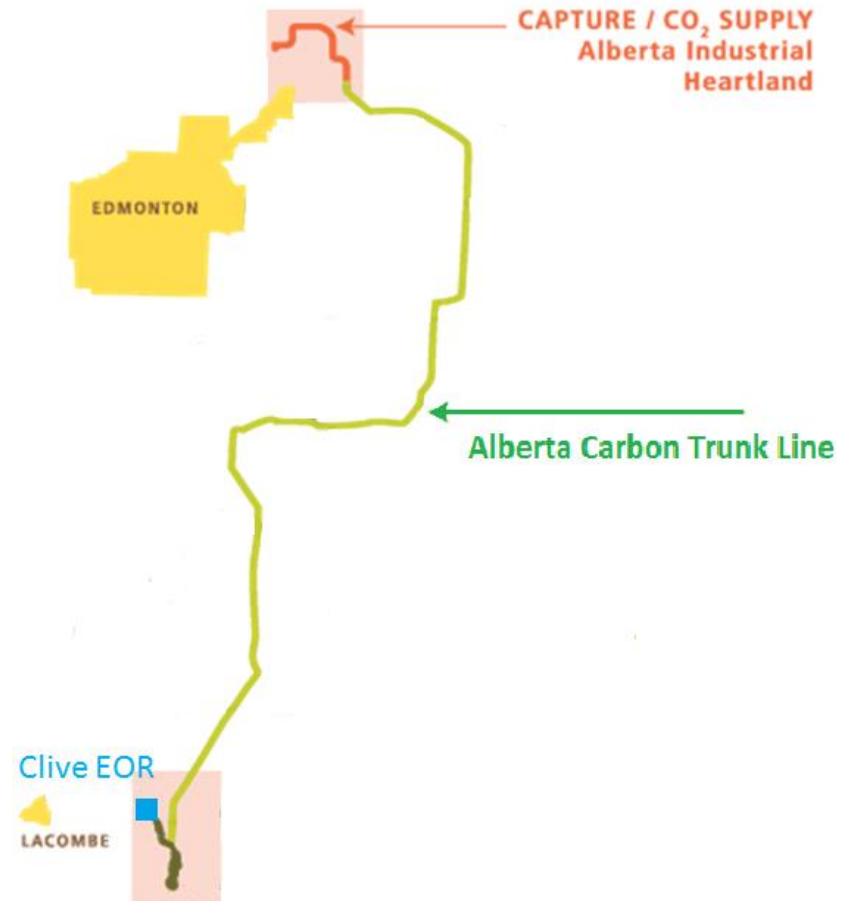
Ultra Low Sulphur Diesel ~40,250 bpd
Diluent / Naphtha ~28,000 bpd
Low Sulphur Vacuum Gas Oil ~8,790 bpd
Butane and Propane ~3,363 bpd
High Quality CO2 3,500 tonnes/day





Reducing the Carbon Footprint of Fuels

- Carbon capture, utilization and storage was part of the refinery's design from the outset
- CO₂ produced in the refining process will be captured, compressed, and shipped approximately 240 km to central Alberta
- The Alberta Carbon Trunk Line is a CO₂ pipeline currently under construction that will transport CO₂ from industrial facilities like the Sturgeon Refinery to depleted oil fields
- CO₂ will then be used for enhanced oil recovery to generate low carbon oil that is otherwise unattainable from traditional extraction methods





Be back in
1 month



2019 SHUTDOWN STATS

**SHUTDOWN WILL
GENERATE NEARLY
\$25 MILLION IN WAGES
FOR DIRECT AND INDIRECT
LABOUR FROM LOCAL
CONTRACTORS IN THE
CAPITAL REGION**

**SHUTDOWN WILL SOURCE
GOODS AND SERVICES
AS FAR AWAY AS ITALY
BUT AN EFFORT TO SHOP
LOCAL WILL KEEP
OVER 75% OF SPENDING
IN THE CAPITAL REGION**



2019
SHUTDOWN
STATS







Emergency Training and Preparedness

- Ongoing training within Emergency Operations Centre and Crisis Management Teams
- Working with local mutual aid organization, industry neighbors, and local municipalities to improve mutual aid functionality
- Regular training drills including simulating a tank farm fire (seen in picture)





ALARM TESTS



**WEEKLY ON WEDNESDAY
AT 12 PM AND 8 PM**

AS PART OF EMERGENCY RESPONSE PREPAREDNESS

If you are nearby the refinery,
you may hear one of three alarms for the weekly test

- Site Muster, Site Assembly, or All Clear -

with a different alarm each week.

The alarm tests last no more than 30 seconds.

No action is required.

Questions about our alarm tests or emergency response plans?
greatsite@nwrpartnership.com



Community Investment

- **\$650k+ community investment** in local organizations for youth education, seniors causes, food banks, 4-H and others since 2015 all funded through recycling refunds from beverage containers, scrap metal, and more
- **Waste into Worth** project challenged community groups to submit ideas for turning waste into something of value, with the winner being a local school who used the \$3k prize to build a Learning Farm whereby chickens consume waste scraps from lunches and the egg production is used in the school's nutrition program





Our Vision



Maximize the value of Alberta's energy resources

~

Build a refinery with the world's best environmental performance

~

Keep jobs and value in Canada



Vanessa Goodman
Manager, External Relations

587.469.6325
vgoodman@nwrpartnership.com

