



Community Presentation

April 25_26, 2019

Agenda

1 Rebrand

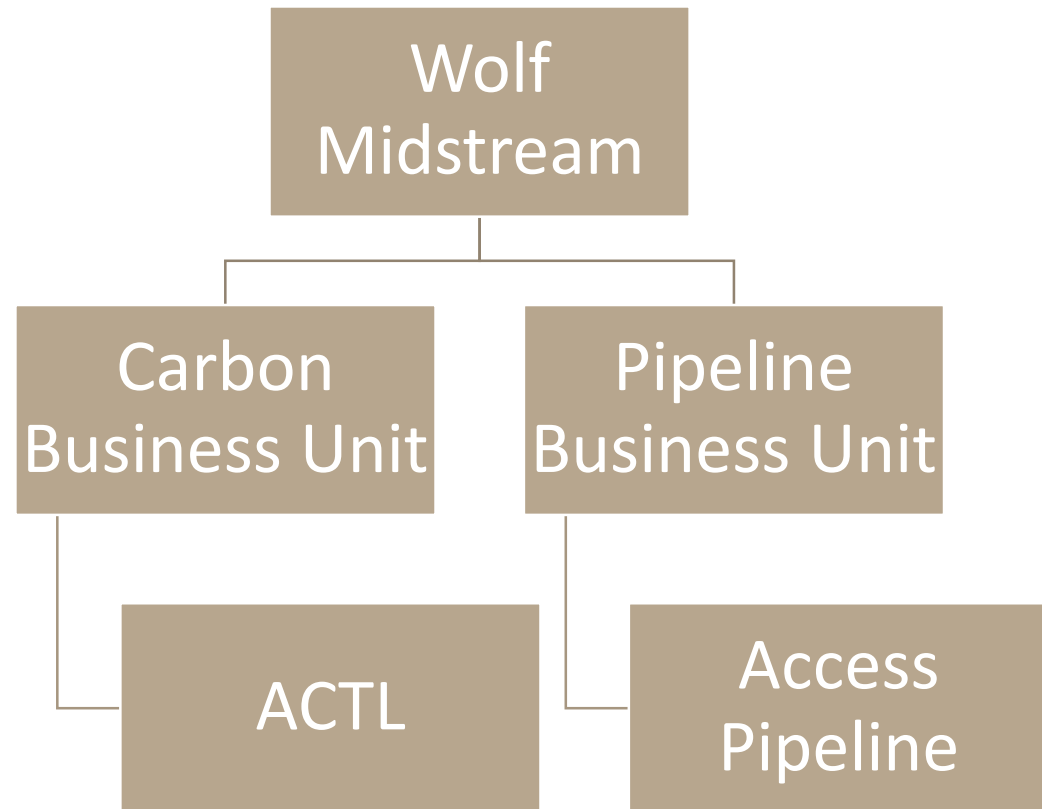
2 Access Pipeline

3 Alberta Carbon Trunk Line (ACTL)



Responsibly Delivering Energy for Generations

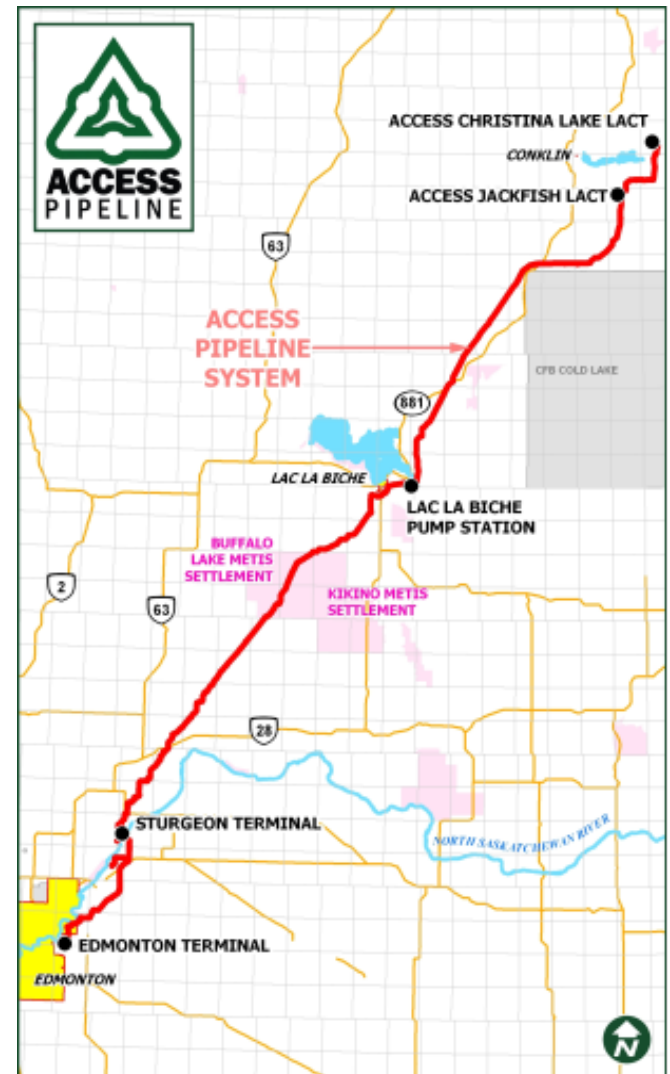
- Alberta Based Company
- Focused on investing in Western Canadian energy infrastructure
- Responsible owner, operator and developer of midstream infrastructure projects



Pipeline Business Unit (Access Pipeline System)

Access Pipeline System

- Service Conklin area SAGD facilities
- 42"/30" Blend Pipeline
- 24" Diluent Pipeline
- Sturgeon Terminal
- Greater Edmonton Area Diluent Gathering System
- Operate Stonefell Terminal and Bruderheim Pipeline System



Access Pipeline History

2007

- Access Pipeline - In-Service

2014

- Major pipeline expansion project complete

2016

- Wolf Midstream acquired 50% ownership

2018

- Wolf Midstream acquired the final 50%

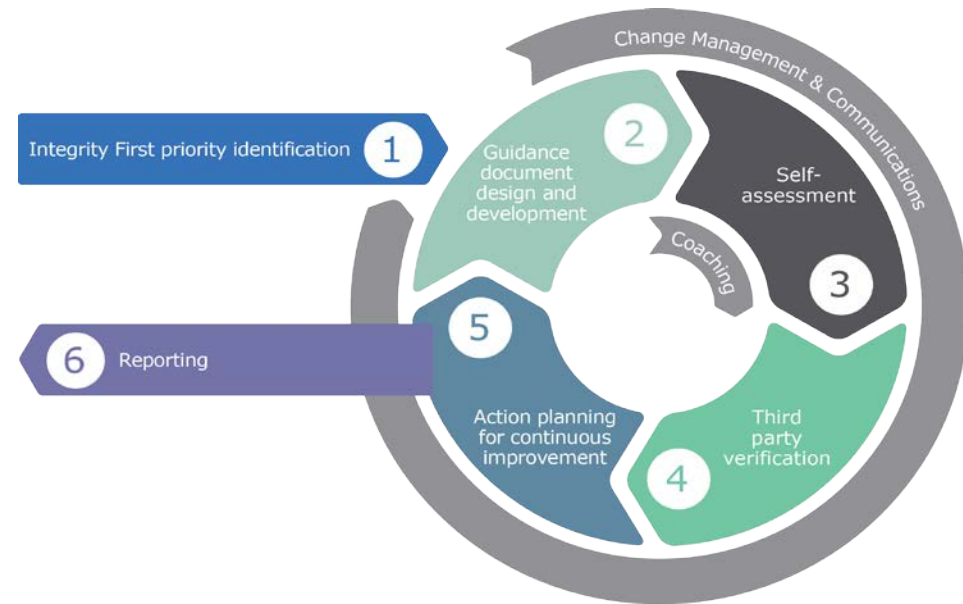
2019

- Rebranded under Wolf Midstream

Uncompromising commitment to Health, Safety and the Environment.

CEPA members collaborate to continuously advance their operations in 10 key priority areas with a goal of zero incidents.

- EMERGENCY MANAGEMENT
- PIPELINE INTEGRITY
- DAMAGE PREVENTION
- CONTROL ROOM MANAGEMENT
- INDIGENOUS RELATIONS
- WATER PROTECTION
- ENVIRONMENTAL STEWARDSHIP
- SECURITY
- LAND USE & ACCESS
- MANAGEMENT SYSTEMS



<https://cepa.com>

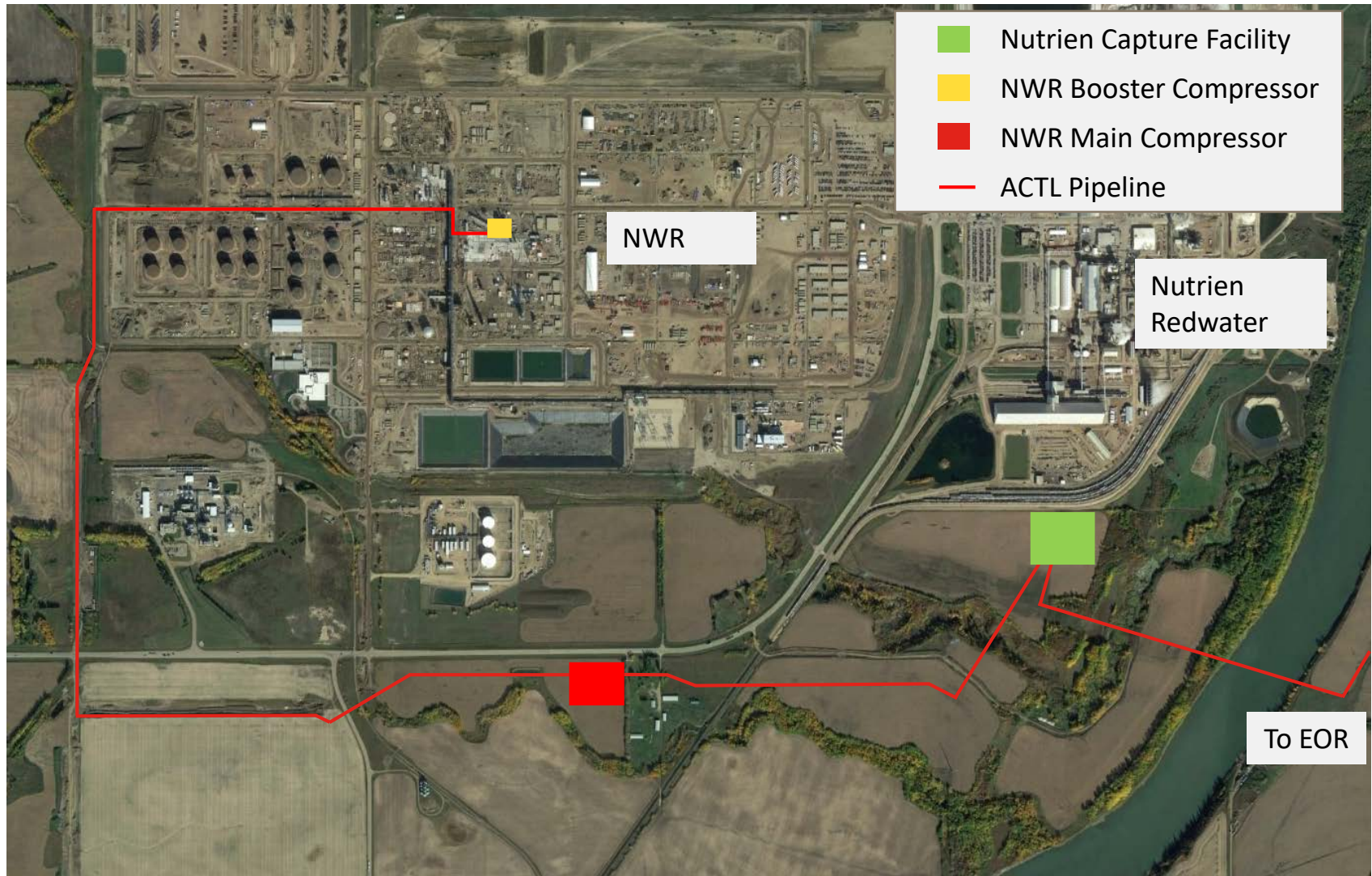
Carbon Business Unit - Alberta Carbon Trunk Line (ACTL)

The Alberta Carbon Trunk Line (ACTL)

- 240 km, high pressure 16" CO₂
- Connects Alberta Industrial Heartland to oil reservoirs in the Lacombe area
- ACTL will be the largest capacity CO₂ pipeline in the world once complete in 2020
- Pipeline will initially transport 4,400 tonnes/d with total capacity of 40,000 tonnes/d
- Open access CO₂ pipeline



Redwater Area Infrastructure

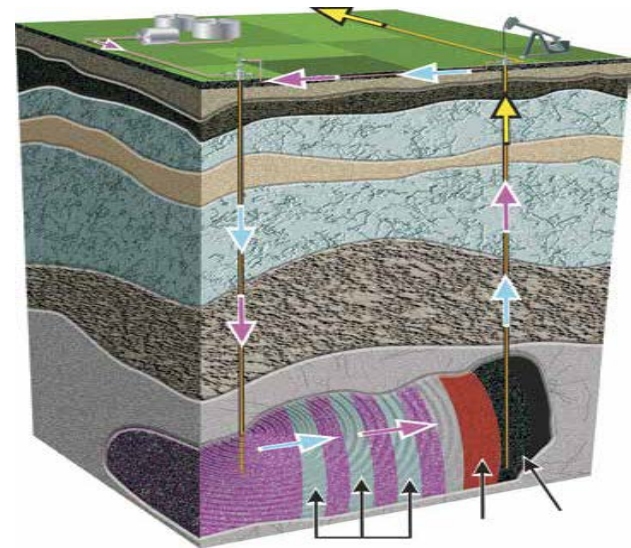


Why is this Project Important?

- Supports improved environmental stewardship
 - › ACTL, at capacity, will allow the removal of 14.6 million tons of CO₂ per year
 - › Equal to approx. 2.6 million cars being removed from our roads
 - › “without CCS as part of the solution meeting global climate goals will be practically impossible”

- Dr. Fatih Birol, Executive Director, International Energy Agency

- In conjunction with EOR, carbon capture provides incremental production and extends the life of existing reservoirs
- Greater than \$500 million in capital investment.



Project Status - Facilities

NWR Booster Compressor

- Construction complete, in commissioning phase

NWR Main Compressor and Nutrien Capture Facility

- Site clearing in progress
- Modules being completed in Calgary
- Construction commencing soon after site clearing
- Commissioning and start-up late 2019/Q1 2020

New Supply

- Currently seeking new sources of CO2 supply in the Heartland area

Wolf Midstream Contact Information

Website

www.wolfmidstream.com

Email

info@wolfmidstream.com

Pipeline Business Unit

kroebuck@wolfmidstream.com

Carbon Business Unit

jpearson@wolfmidstream.com

Community Investment

community.wp@wolfmidstream.com

Thank you